

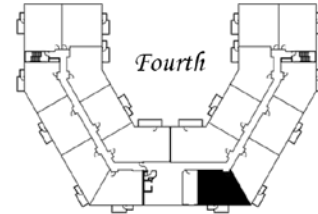
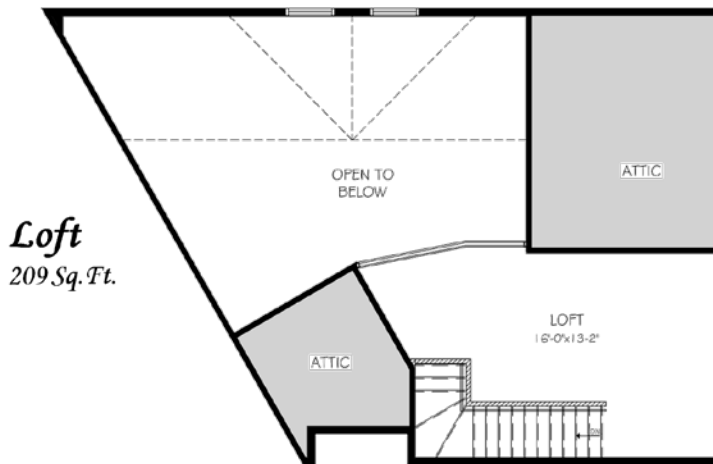
Special Features

- ✓ Vaulted ceilings and loft over common living space
- ✓ Bright wrap-around kitchen with breakfast bar
- ✓ Beautiful views of the Bow River

Notes

- Call Tom at (403) 932-4214 (cell: 620-4567)
- Ask Tom if my suite is a mirror image of this drawing.

These plans and specifications are for marketing purposes only. The developer reserves the right to modify plans due to unforeseen circumstances. Areas are approximate and may be subject to change.



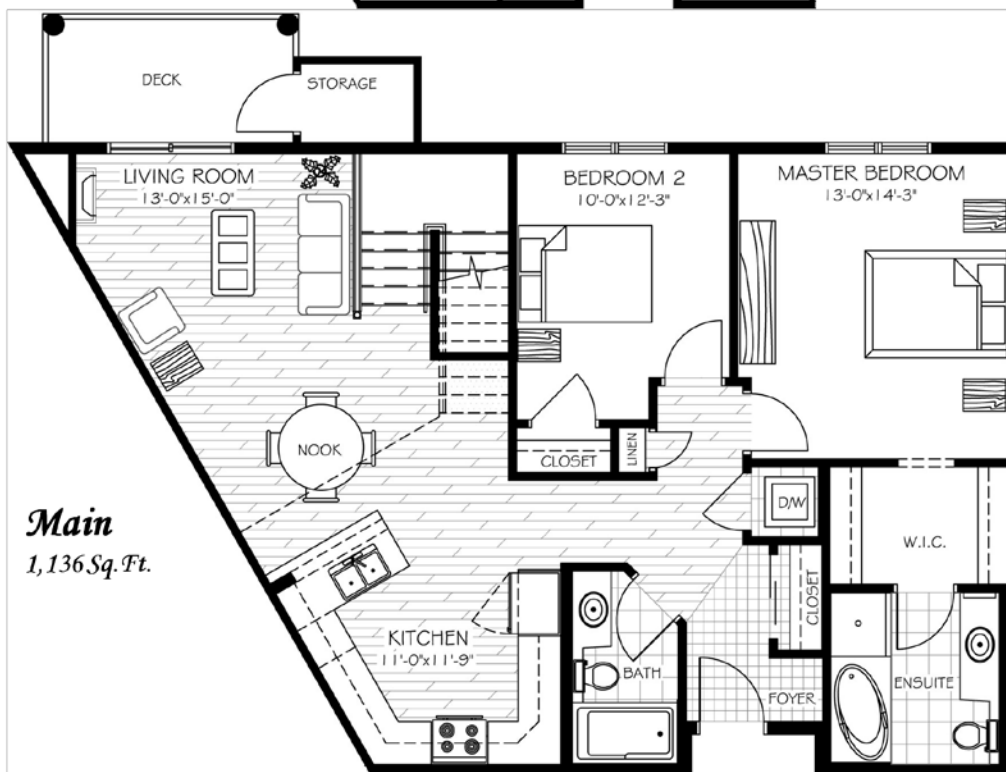
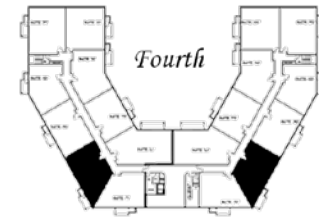
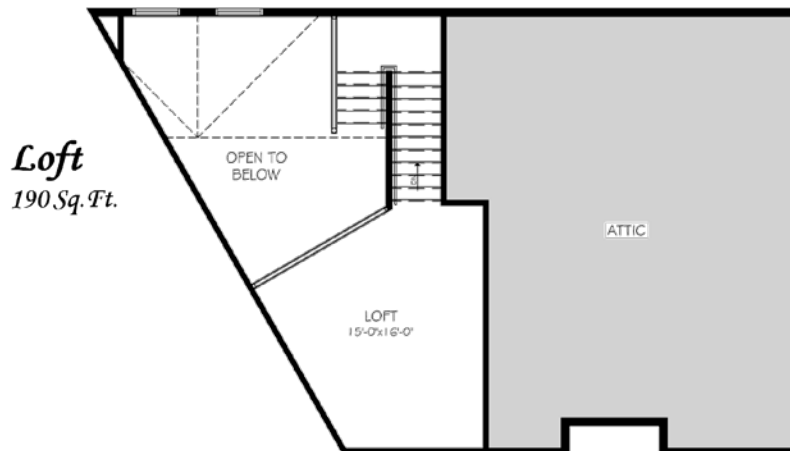
Special Features

- ✓ Vaulted ceilings and loft over common living space
- ✓ Bright wrap-around kitchen with breakfast bar
- ✓ Beautiful views of the Bow River
- ✓ Spacious open living area

Notes

- Call Tom at (403) 932-4214 (cell: 620-4567)
- Ask Tom if my suite is a mirror image of this drawing.

These plans and specifications are for marketing purposes only. The developer reserves the right to modify plans due to unforeseen circumstances. Areas are approximate and may be subject to change.



Special Features

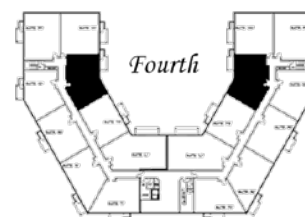
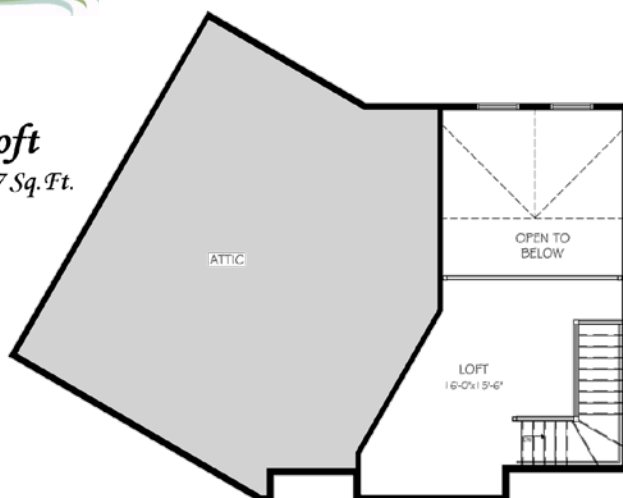
- ✓ Large executive 2 bedroom plan plus loft
- ✓ Standard loft finishing including hardwood flooring, ceramic entry and electric fireplace
- ✓ Beautiful views of the Bow Valley

Notes

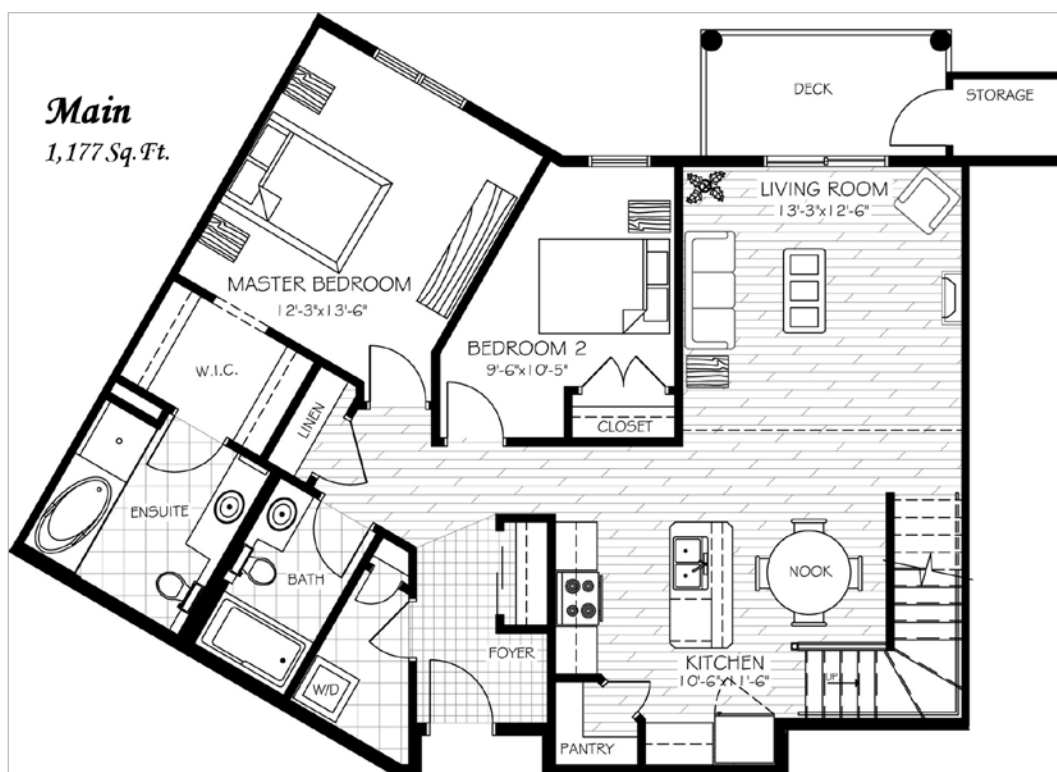
- Call Tom at (403) 932-4214 (cell: 620-4567)
- Ask Tom if my suite is a mirror image of this drawing.

These plans and specifications are for marketing purposes only. The developer reserves the right to modify plans due to unforeseen circumstances. Areas are approximate and may be subject to change.

Loft
197 Sq. Ft.



Main
1,177 Sq. Ft.



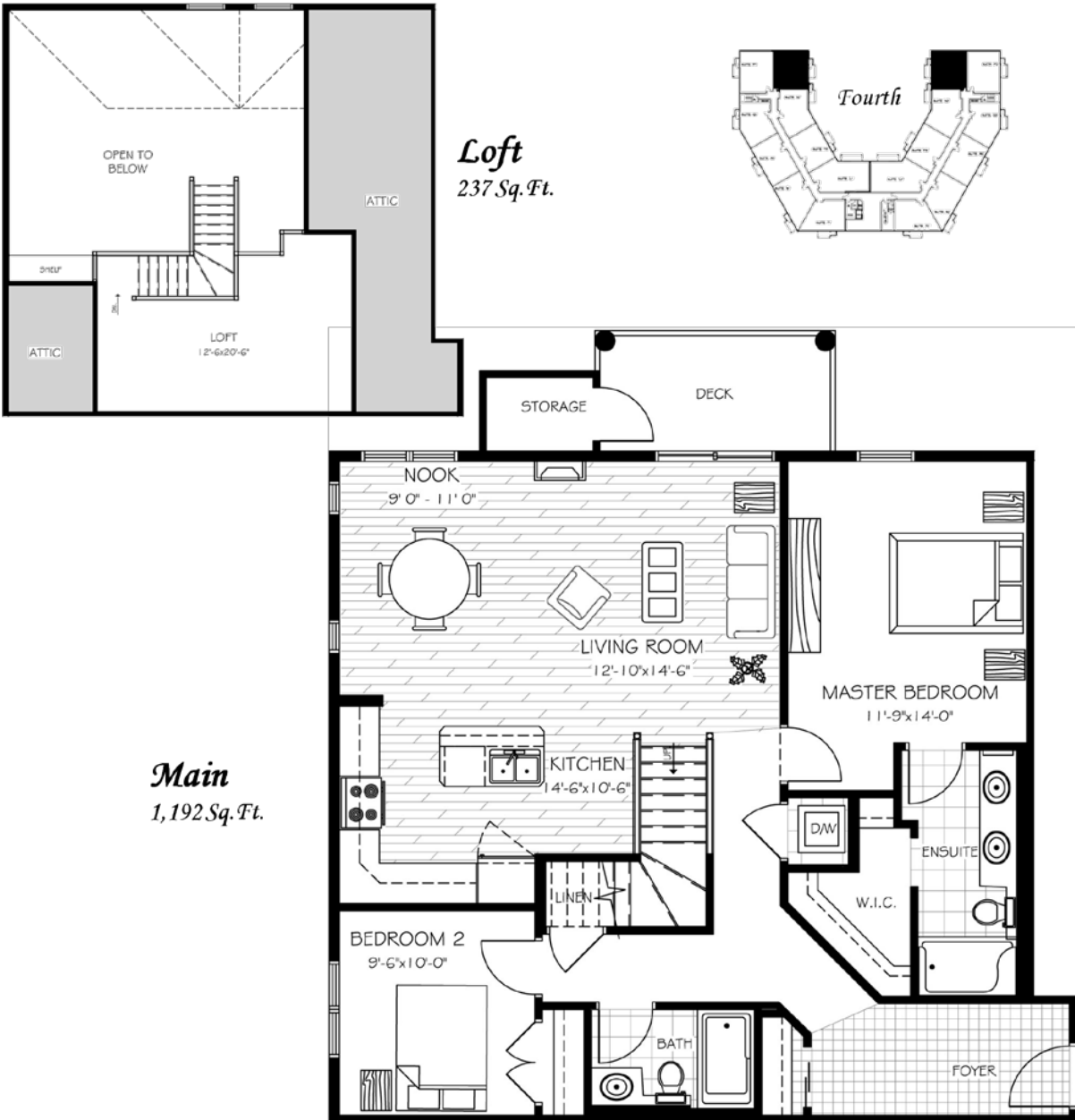
Special Features

- ✓ Almost 1400 sq.ft. of luxury executive living
- ✓ Large kitchen pantry
- ✓ Spacious master bedroom and second bedroom
- ✓ Dramatic 18' ceilings with open loft living space

Notes

- Call Tom at (403) 932-4214 (cell: 620-4567)
- Ask Tom if my suite is a mirror image of this drawing.

These plans and specifications are for marketing purposes only. The developer reserves the right to modify plans due to unforeseen circumstances. Areas are approximate and may be subject to change.



Special Features

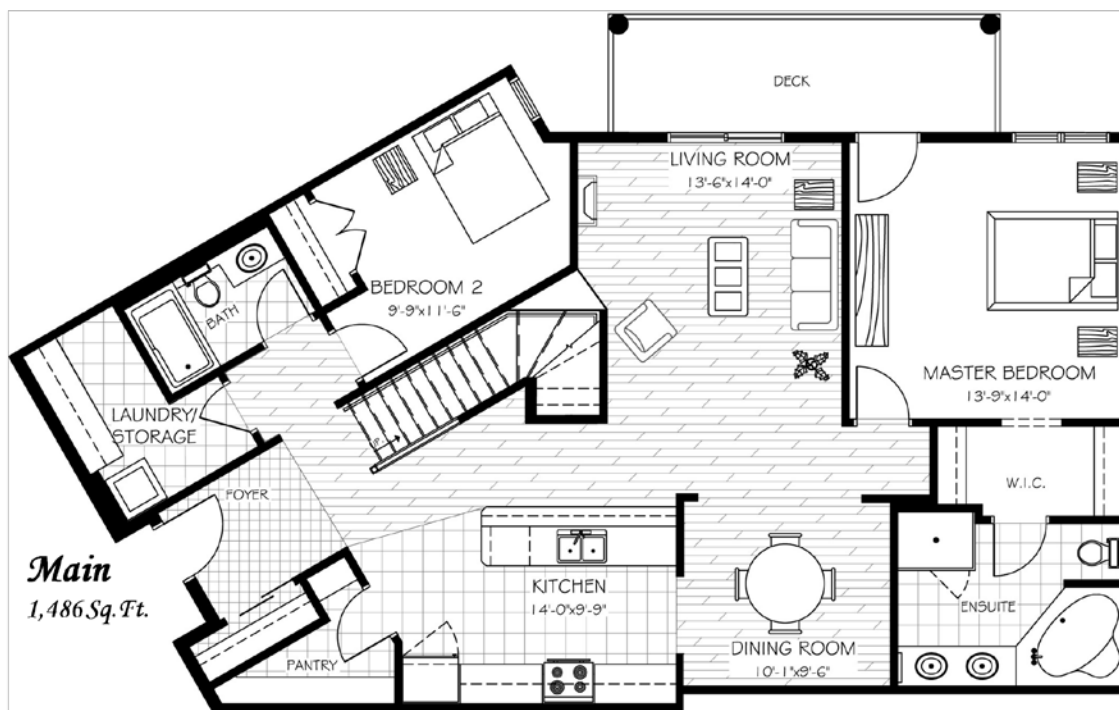
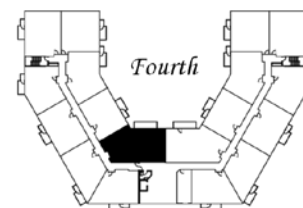
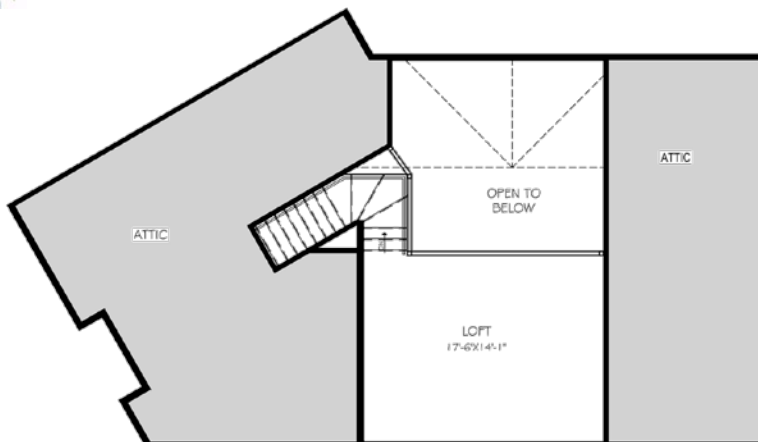
- ✓ Open alpine style common living area
- ✓ Spacious master bedroom with double sink ensuite
- ✓ Dramatic 18' vaulted ceiling with loft and 2 bedrooms
- ✓ Bright corner unit with natural reserve views

Notes

- Call Tom at (403) 932-4214 (cell: 620-4567)
- Ask Tom if my suite is a mirror image of this drawing.

These plans and specifications are for marketing purposes only. The developer reserves the right to modify plans due to unforeseen circumstances. Areas are approximate and may be subject to change.

Loft
251 Sq. Ft.



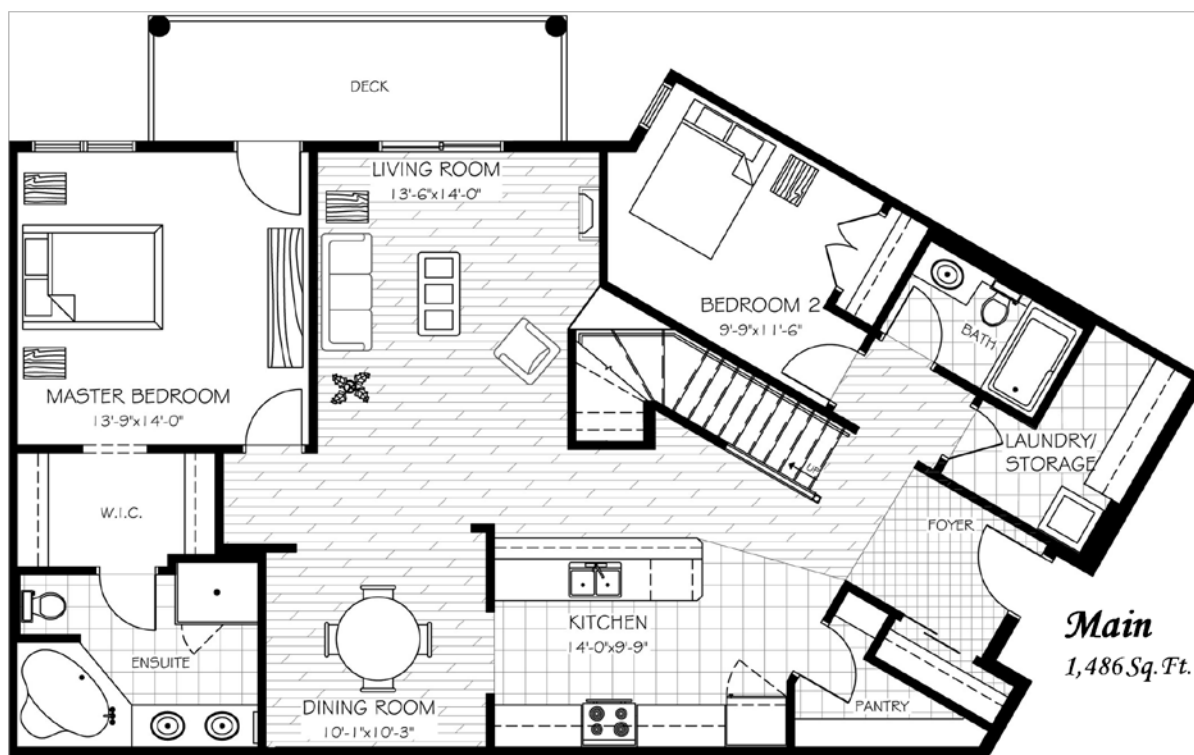
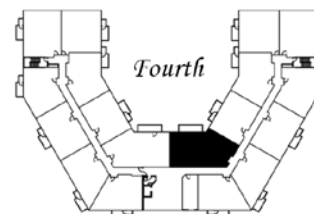
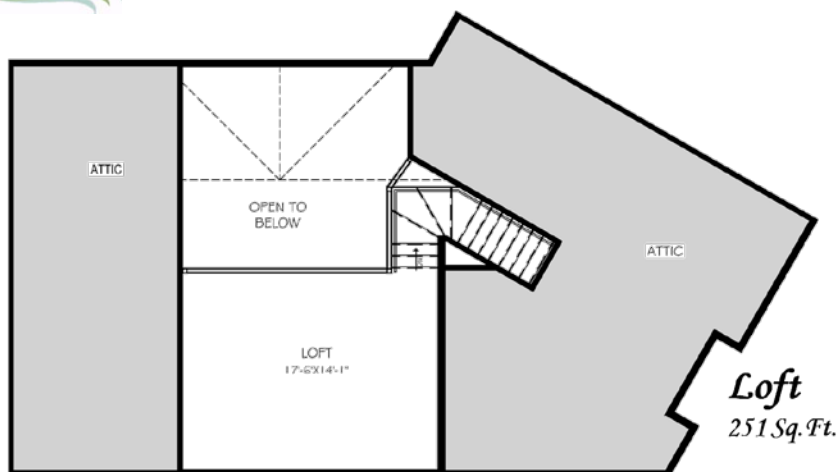
Special Features

- ✓ Largest suite in the community
- ✓ Gourmet kitchen and island
- ✓ Large bright loft overlooking courtyard and reserve
- ✓ Large master bedroom with spa like bath

Notes

- Call Tom at (403) 932-4214 (cell: 620-4567)
- Ask Tom if my suite is a mirror image of this drawing.

These plans and specifications are for marketing purposes only. The developer reserves the right to modify plans due to unforeseen circumstances. Areas are approximate and may be subject to change.



Special Features

- ✓ Largest suite in the community
- ✓ Large gourmet kitchen and island
- ✓ Oversized deck with master bedroom access
- ✓ Bright loft area overlooking courtyard and reserve

Notes

- Call Tom at (403) 932-4214 (cell: 620-4567)
- Ask Tom if my suite is a mirror image of this drawing.

These plans and specifications are for marketing purposes only. The developer reserves the right to modify plans due to unforeseen circumstances. Areas are approximate and may be subject to change.